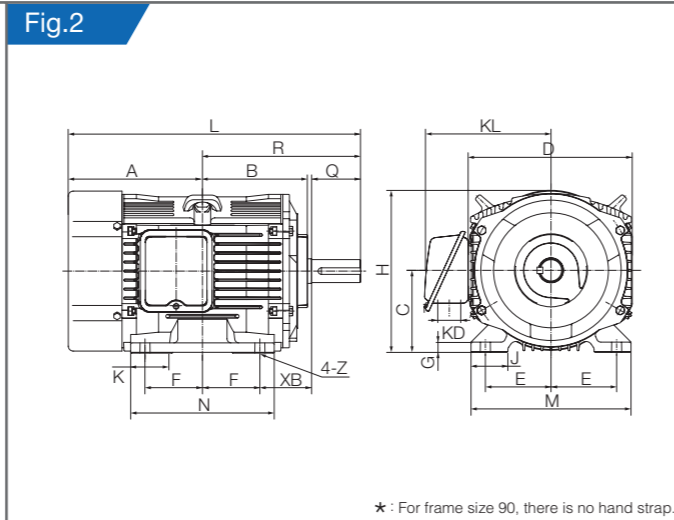
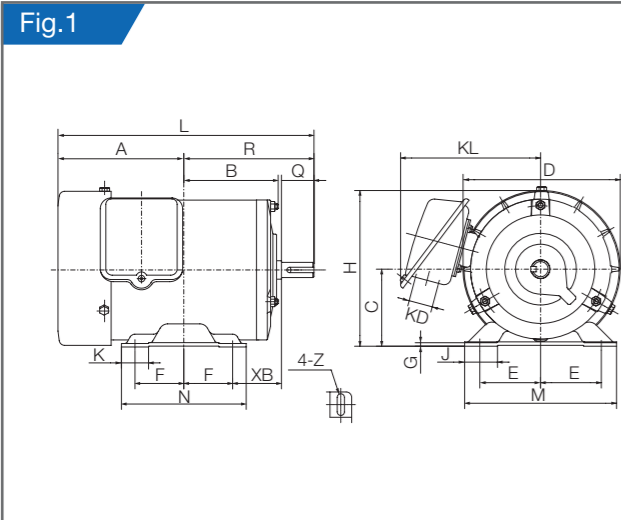
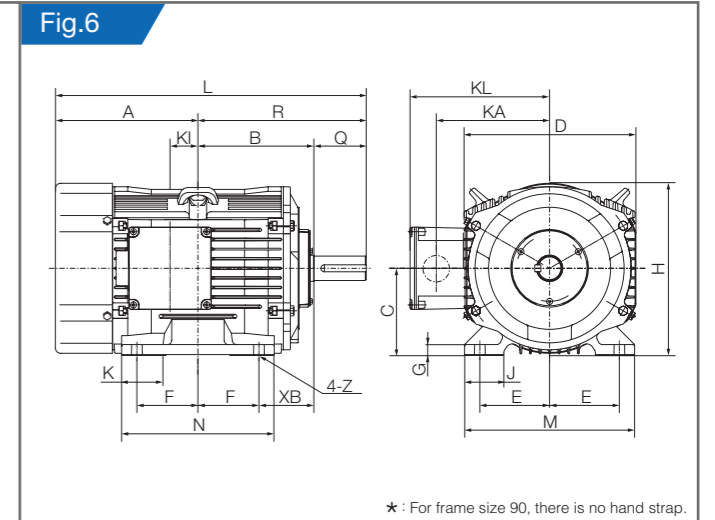
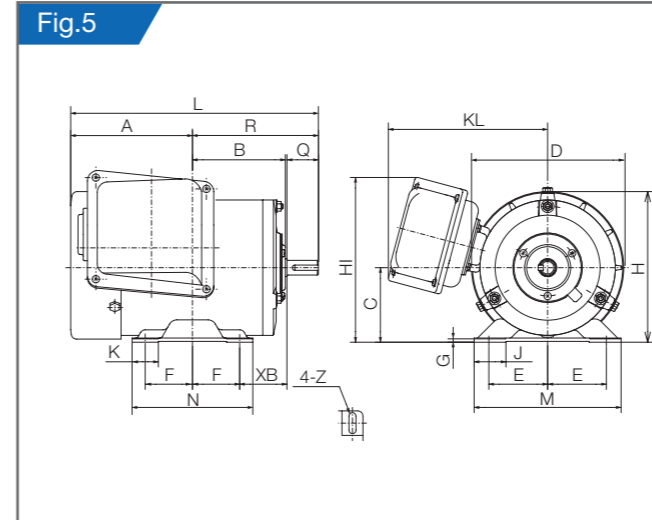


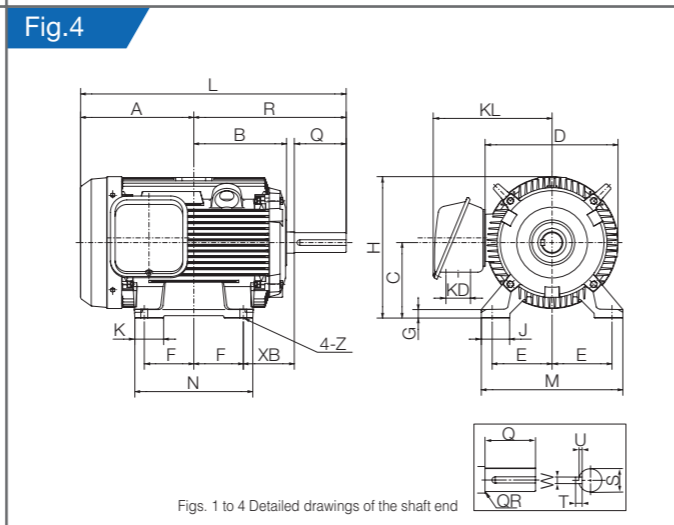
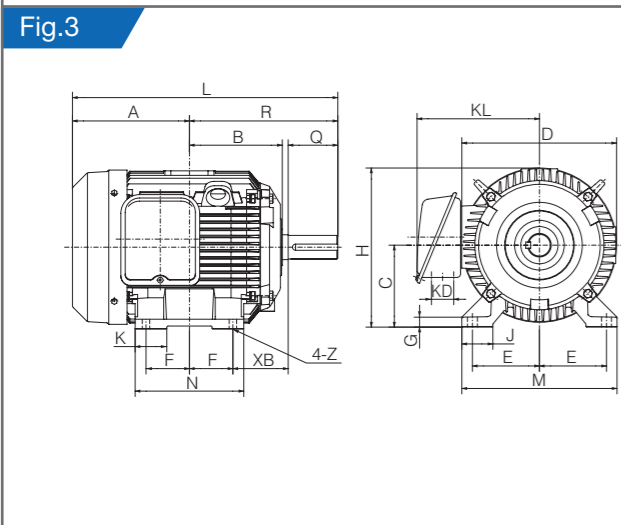
Dimensions



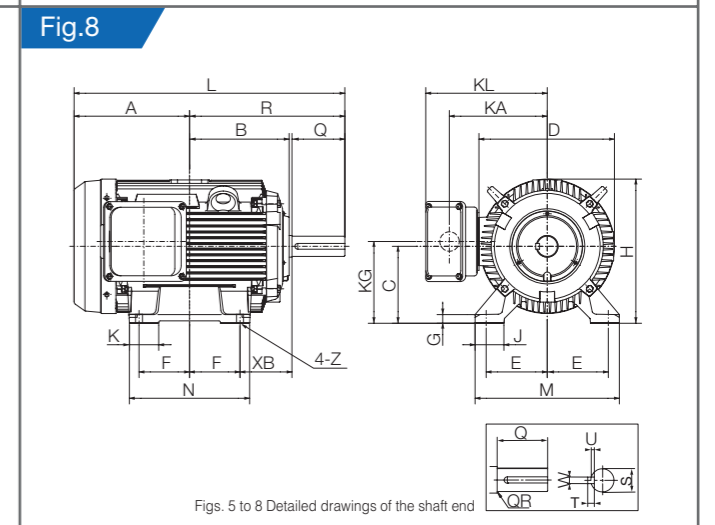
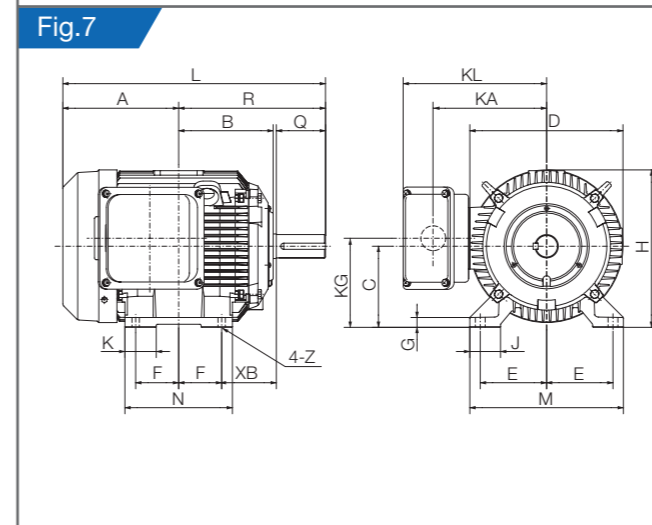
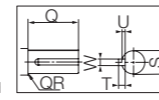
* : For frame size 90, there is no hand strap.



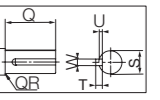
* : For frame size 90, there is no hand strap.



Figs. 1 to 4 Detailed drawings of the shaft end



Figs. 5 to 8 Detailed drawings of the shaft end



Type	Frame size	Output			Heat-resistant class	Fig.No	Dimensions (mm)											Dimensions (mm)											Approx.weight (kg)							
		2 pole	4 pole	6 pole			L	R	A	B	D	KL	K	J	H	C	F	E	N	M	G	Z	XB	S	W	U	T	Q	QR	2 pole	4 pole	6 pole				
Totally enclosed fan-cooled types	Neo100 TFO-HK	71M	0.4	0.4	—	E	1	246	120	126	87	145	129	25	30	143.5	71 ^{-0.05}	45	56	115	140	3.2	7x20	45	14j6	5	3	5	30	1.0	9.5	8.2	—			
		80M	0.75	0.75	0.4		1	268.5(2P) 280.5	140	128.5(2P) 140.5	96	163	135	25	35	161.5	80 ^{-0.05}	50	62.5	125	160	3.2	10x25	50	19j6	6	3.5	6	40	0.3	13.5	12.5	16.0			
		90L	1.5 2.2	1.5	0.75		2	315	168.5	146.5	114.5	182	149	49	35.5	178	90 ^{-0.05}	62.5	70	155	170	10	10	56	24j6	8	4	7	50	0.3	17.0 20.0	18.0	17.0			
		100L	—	2.2	1.5		2	356	193	163	129	198	156	51.5	45	197.5	100 ^{-0.05}	70	80	175	195	12.5	12	63	28j6	8	4	7	60	0.5	—	24.0	26.0			
		112M	3.7	3.7	2.2		2	372	200	172	136	225	169	51.5	45	219.5	112 ^{-0.05}	70	95	175	224	14	12	70	28j6	8	4	7	60	0.5	34.0	34.0	34.5			
	Neo100 TFO-HK	132S	5.5 7.5	5.5	3.7	B	3	427.5	239	188.5	149.5	250	197	51	50	257	132 ^{-0.05}	70	108	175	250	16	12x14	89	38k6	10	5	8	80	0.5	40 44	40	40			
		132M	—	7.5	5.5		3	465.5	258	207.5	168.5	250	197	51	50	257	132 ^{-0.05}	89	108	212	250	16	12x14	89	38k6	10	5	8	80	0.5	—	46	51			
		160M	11 15	11	7.5		4	563	323	240	196.5	282	251	61	60	300	160 ^{-0.05}	105	127	250	300	18	14.5x16.5	108	42k6	12	5	8	110	1.0	65 75	62	61			
		160L	18.5	15	11		4	595	345	250	206.5	282	251	61	60	300	160 ^{-0.05}	127	127	300	300	18	14.5x16.5	108	42k6	12	5	8	110	1.0	83	80	76			
		Totally enclosed fan-cooled types (outdoor types)	Neo100 TFOA-HK	71M	0.4		0.4	—	F(E-RISE)	5	246	120	126	87	145	135	25	—	30	143.5 150	71 ^{-0.05}	45	56	115	140	3.2	7x20	45	14j6	5	3	5	30	1.0	10.0	8.7
80M	0.75			0.75	0.4	5	280.5	140		140.5	95	163	144	25	—	35	161.5 160	80 ^{-0.05}	50	62.5	125	160	3.2	10x25	50	19j6	6	3.5	6	40	0.3	14.0	13.0	16.5		
90L	1.5 2.2			1.5	0.75	6	315	168.5		146.5	114.5	182	153	49	123	—	20	35.5	178	90 ^{-0.05}	62.5	70	155	170	10	10	56	24j6	8	4	7	50	0.3	17.5 20.5	18.5	17.5
100L	—			2.2	1.5	6	356	193		163	129	198	160	51.5	130	—	32	45	197.5	100 ^{-0.05}	70	80	175	195	12.5	12	63	28j6	8	4	7	60	0.5	—	24.5	26.5
112M	3.7			3.7	2.2	6	372	200		172	136	225	173	51.5	143	—	39	45	219.5	112 ^{-0.05}	70	95	175	224	14	12	70	28j6	8	4	7	60	0.5	34.5	34.5	35.0
Neo100 TFOA-HK	132S		5.5 7.5	5.5	3.7	F(B-RISE)	7	427.5	239	188.5	149.5	250	233.5	51	185	145	—	50	257	132 ^{-0.05}	70	108	175	250	16	12x14	89	38k6	10	5	8	80	0.5	41 45	41	41
	132M		—	7.5	5.5		7	465.5	258	207.5	168.5	250	233.5	51	185	145	—	50	257	132 ^{-0.05}	89	108	212	250	16	12x14	89	38k6	10	5	8	80	0.5	—	47	52
	160M		11 15	11	7.5		8	563	323	240	196.5	282	254.5	61	206	170	—	60	300	160 ^{-0.05}	105	127	250	300	18	14.5x16.5	108	42k6	12	5	8	110	1.0	66 76	63	62
	160L		18.5	15	11		8	595	345	250	206.5	282	254.5	61	206	170	—	60	300	160 ^{-0.05}	127	127	300	300	18	14.5x16.5	108	42k6	12	5	8	110	1.0	84	81	77

Note : Request a dimensional drawing to us for design use because the dimensions may be subject to change.

* : For frame size 90, there is no hand strap.